



PRODUCTCATALOG

11

INSTRUMENTS

RMO® has 2 complete lines of orthodontic instruments:

Schweickhardt

Premium Schweickhardt instruments represent the finest quality available at any price. Each Schweickhardt instrument is precisely manufactured to our specifications in Germany with hardened inserts that can be sharpened or replaced, resulting in a more economical product over time than inferior quality products. All Schweickhardt instruments are crafted of 100% surgical stainless steel, are forged and finished by hand.

Apex

Apex incorporates ergonomic design, durable construction, surgical stainless-steel box-jointed forgings and precise tolerances, while remaining very economical. Hardened steel inserts improve performance and extend cutting life.

CONTENTS

210 Schweickhardt

223 Apex

Superior quality maximizes satisfaction

A premium quality instrument offers two unbeatable advantages for its user:

- Premium quality instruments make the daily work more satisfying. Since they allow for a more precise and ergonomic work process, they lead to better work results day to day over years and years.
- Premium quality instruments are the more economic choice:
 - 1) Top quality instruments enable their users to achieve the same work result in less time or a better work result in the same time.
 - 2) Premium quality instruments last longer and therefore minimize investments for replacement and repair.

A. Schweickhardt GmbH & Co. has been producing dental instruments for more than 100 years, which makes them one of the most experienced manufacturers in the world. They are one of the very few manufacturers producing its complete line from raw material to final instrument only in Germany. German craftsmanship, with its legacy of precision, produces the best quality in the world. We invest heavily to support craftsmanship with state-of-the-art, high-tech machinery. Our computerized high precision milling machines, for example, are accurate to 1/100mm.

Inserted Pliers

Especially for inserted pliers, fulfilling all of the above mentioned requirements demands great care and expertise. Certain treatments of hard wires such as cutting and sharp bending of arch wires, specifically stress the working ends of orthodontic pliers. Therefore, these working ends need to be equipped with hard inserts to ensure perfect function and prevent them from being damaged by the wire. RMO® Schweickhardt inserts are made from a special alloy and are applied to the plier with a highly sophisticated brazing technique.

The insert alloy combines hardness (around 62 HRC) with a high corrosion resistance. Therefore the pliers do not need to be chrome plated. Consequently, the pliers can be subject to ultrasonic cleaning and disinfection with appropriate liquids as well as autoclave sterilization. In addition, the pliers don't have the risk of chrome plate peeling off, which could potentially endanger the patient's health if it happens during use of the plier in the patient's mouth. It would also end the lifetime of the plier because if the chrome starts peeling off, the plier will corrode quickly.

Schweickhardt's insert brazing technique was especially developed for these pliers. The inserts are brazed to the plier with great care, which requires effort, but this effort pays off because the inserts always remain attached. No RMO® Schweickhardt plier ever loses its inserts during use, which is not always the case with other company's

pliers. Having mastered the insert technique, three more requirements have to be fulfilled to produce a top quality plier.

The beaks and inserts are milled on high precision machines and additionally get final adjustment by expert craftsmen; because the best insert can only be as good as the exactness of its shape. The joints are produced with great care to ensure a smooth and precise action over the whole working range. The precision of the joint determines the precision of the plier. If the joint is not tight enough, the plier will not function properly because the working ends will not close as precisely as they are supposed to. If the joint is too tight, opening and closing will cause difficulties which in turn makes exact work very difficult.

A box joint lock, the gold standard of joints in terms of long-term precision, is technically not possible for inserted pliers. But screw joints ensure a precise opening and closing procedure over a long time. The screw is fastened into the body with a special procedure so that it won't become loose even after years of usage. All edges of the pliers are carefully chamfered to increase safety of patient and doctor (no pinching or cutting of gums).

A safer grip of the wire (so the wire won't slip off) is due to a tungsten carbide coating; these are the only pliers having this coating. The non-inserted pliers are produced with the same great care on beak form, joints and edge chamfering as our inserted pliers.

Warranty

- All SCHWEICKHARDT/RMO® instruments are fully guaranteed against corrosion and separation of inserts for five years from the purchase date.
- All SCHWEICKHARDT/RMO® instruments are fully guaranteed for the life of the instrument to be free of defects in materials and workmanship.
- All SCHWEICKHARDT/RMO instruments, if misused, abused or failure to properly maintain or care for the instruments will void all warranty claims.

Return

- All RMO® instruments, which are unopened and in the original package, may be returned for full credit of the purchase price within 90 days of invoice.
- All RMO® instruments, if defective, not misused, or tampered with in any manner, are returnable to RMO for repair, replacement or refund at RMO®'s option.

Repair

For SCHWEICKHARDT/RMO instruments outside the warranty, call RMO® customer service or your sales representative for recommendation for repair. RMO® customer service number is 1-800-525-6375.

SCHWEICKHARDT inserted pliers

More precise handling of wire. High precision beaks guarantee perfect holding, bending and cutting results.

Longer lasting working ends through especially hard inserts.

High corrosion resistance without chrome plating — zero risk of plating peeling off.

Special manufacturing process brazes the inserts to the beaks. The results are very precise and reliable.

Higher safety and comfort through careful chamfering of all edges.

Better guidance of working ends. Precision machine work on both joint and screw ensure a precise and smooth action over a long time.



Easier instrument care: All standard U.S. hygienic procedures are applicable, especially ultrasonic cleaning and hot air sterilization up to 390° F.

SCHWEICKHARDT non-inserted pliers

More precise handling of wire. High precision beaks guarantee perfect holding, bending and cutting results.

Longer lasting working ends through especially hard inserts.

Higher safety and comfort through careful chamfering of all edges.

Better guidance of working ends. Precision machine work on both joint and screw ensure a precise and smooth action over a long time.



Handle shape designed for comfort and ease of use.

Easier instrument care: All standard U.S. hygienic procedures are applicable, especially ultrasonic cleaning and hot air sterilization up to 390° F.



Band Adapter (RMO®)

- Durable plastic bite block and RMO® tempered stainless steel band seating pin
- For bite or hand rocking bands
- White plastic handle
- Serrated pin
- Replacement bite block (can be installed at chairside)
- Cold sterilize

Description	Package Contains	Order Number
Band adapter (RMO®)	1	I00064
Replacement bite block	2	I00065



Band Pusher

- Serrated stainless steel tip, non-removable
- Stainless steel handle – square with chamfered corners
- Tip end has square serrations

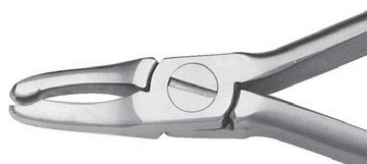
Package Contains	Order Number
1	I00300



Band Seater (RMO®)

- Spring actuated thrust insures proper band seating
- Plastic handle with stainless steel barrel and tempered steel removable tip

Description	Package Contains	Order Number
With offset tip	1	I00580
Replacement offset tip	1	I00581
With straight tip	1	I00600
Replacement straight tip	1	I00601
With narrow straight tip (Gaston)	1	I00610
Replacement narrow straight tip	1	I00611
Replacement spring	1	I00582



Contouring Plier (Johnson)

- Concave and convex tips for contouring bands
- Stainless steel

Package Contains	Order Number
1	I00114



Contouring Plier (Gordon)

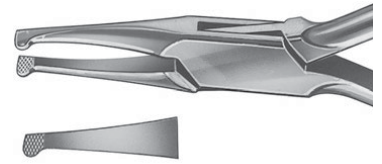
- For bands & anterior stainless steel crowns
- Stainless steel
- Box joint

Package Contains	Order Number
1	I00137

How Plier Straight

- Extra hard stainless steel
- Good all around utility plier has long slender lip-safe beaks
- Tips are serrated and hard carbide coated for additional grip
- Lip-safe edges at box and beaks
- Tips are precisely adjusted

Package Contains	Order Number
1	I00110



How Plier Curved

- Same as I00110 only with curved beaks
- Curved beaks increase efficiency in posterior area

Package Contains	Order Number
1	I00111



Utility Plier (Weingart Style)

- Stainless steel
- Tips are delicate and meet precisely so that even small attachments can be firmly held
- General purpose utility plier with curved beaks
- Inserted tempered tips for longer life
- Serrated and lip safe
- Tip width 8mm / Tip length 10mm
- Up to .020" (.508mm) wire

Package Contains	Order Number
1	I00556

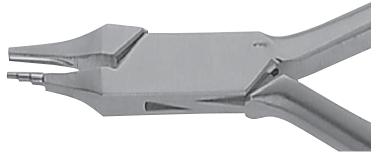


Utility Plier (Weingart Style - Mini)

- Stainless steel
- Tips are delicate and meet precisely so that even small attachments can be firmly held
- General purpose utility plier with curved beaks
- Tempered tips for longer life
- Serrated and lip safe
- Tip width 6mm

Package Contains	Order Number
1	I00586





Loop Plier (Tweed)

- Tips precision milled
- Three step loop former: .049" (1.25mm), .065" (1.65mm), .085" (2.15mm)
- Grooved and serrated opposing tip for very small loops
- For up to .022" x .028" (0.559mm x 0.711mm) wire
- Non-removable tip

Package Contains	Order Number
1	I00350



Loop Forming Plier (Optical Type)

- Cone and concave beaks for round wires
- Concave beak is contoured for more uniform loops
- Round beak is precision ground to .047" at tip
- For up to .020" (0.508mm) round wires

Package Contains	Order Number
1	I00351



Loop Plier (Tweed)

- Includes one extra replacement tip
- It has two sections of .047" (1.2mm), .059" (1.5mm)
- Concave beak prevents wire nicking and ensures more uniform loops; for making Omega loops
- For up to .020" (0.508mm) wire

Description

Loop Plier
Replacement tips

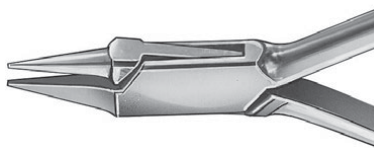
Package Contains	Order Number
1	I00548
2	I00549



Wire Bending Plier Angle (Bird Beak Type)

- Tips meet very precisely
- Cone and pyramid shaped tips
- Carbide coated tips for better grip of wire and longer lifetime
- Round beak is precision ground to .039" (1.0mm) at tip
- For up to .022" x .025" (0.559mm x 0.635mm) wire and round up to .028" (0.711mm)

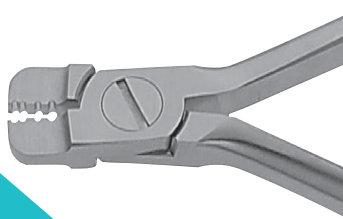
Package Contains	Order Number
1	I00139



Light Wire Plier

- Longer, more gradually tapered beak than the Bird Beak Plier
- For working light round wires up to .020" (0.508mm)
- Longer beaks make it easier to bend small diameter loops

Package Contains	Order Number
1	I00140



Lingual Arch Forming Plier

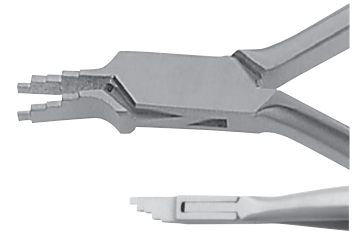
- Designed to form double back and triple back bend in either .030" (0.762mm) or .036" (0.914mm) wire for inserting in lingual sheaths
- Double back groove is close to the plier joint to assure adequate forming
- Recommended for use with 3D® FIXED/REMOVABLE™ (Wilson®) for palatal activation appliances

Package Contains	Order Number
1	I00420

Closing Loop Plier (Nance)

- Extra hard stainless steel
- Four step loop forming beaks precision milled
- Radiused edges prevent wire damage
- Up to .028" (0.711mm) wire

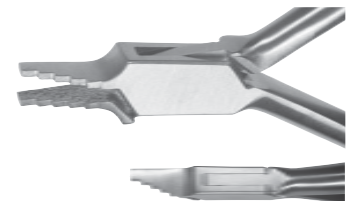
Package Contains	Order Number
1	I00001



Closing Loop Plier (Standard)

- Same use and same characteristics as the Nance i00001, but permits uniform vertical bendings
- Permits the simultaneous forming of two right angled bends
- Up to .028" (0.711mm) wire

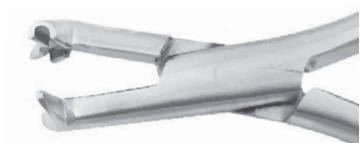
Package Contains	Order Number
1	I00101



Nickel Titanium Crimping Plier

- Forms a smooth bend or crimp without nicking Nickel Titanium wire
- Used on .012 to .028 (.305mm to .711mm) wire

Package Contains	Order Number
1	I00161



Three Jaw Clasp Adjusting Plier (Aderer Type)

- Tips for rounded or dimensional wire up to .040" (1.016mm)
- Exact shape and position of beaks will avoid squeezing and marking of wire
- Made from extra hard stainless steel

Description

Up to .040" (01.016mm)
Up to .030" (0.762mm)

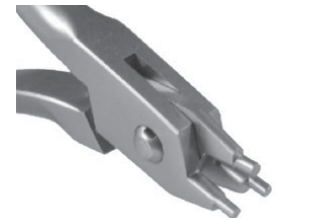
Package Contains	Order Number
1	I00200
1	I00201



Three Jaw Bending Plier

- Very sturdy, for wires up to .060" (1.5mm)
- Can be used for bending the arms of expansion appliances

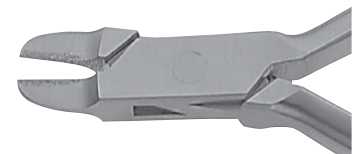
Package Contains	Order Number
1	I00035



Arch Forming Plier (Angle)

- For bending, holding or torquing dimensional wires
- Stainless steel with hard carbide coated tip surfaces
- Offering max resistance against wear by torquing
- Up to .021" x .028" (0.534mm x 0.711mm) wire

Package Contains	Order Number
1	I00442





Distal End Cutter With Safety Hold

- Shear cuts hard wire and then safety holds the loose distal end to prevent wire from going into tissue
- Hard tool steel insert
- For up to .021 x .025 (0.534mm x 0.635mm) and .026 (.66mm) round wire
- Designed for intraoral cutting and lip safety
- Surgical stainless steel provides lasting beauty and durability
- Recommended for all non-braided wire

Description	Package Contains	Order Number
Regular beak	1	I00550
Small beak (Reaches the molar area easier, due to the small beak)	1	I00554



Flush Distal End Cutter with O-Ring

- Hardened insert
- Wire up to .022" x .028" (0.559mm x 0.711mm) and up to .026" (0.660mm) round
- O-ring ensures no direct contact, keeping a longer lasting sharpness

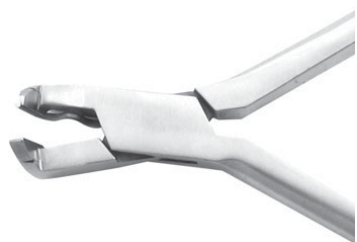
Description	Package Contains	Order Number
short cutter	1	I00567
long cutter	1	I00568
replacement o-ring	10	I00569



Distal End Cutter Flush V Design

- Assures arch wire is cut flush with the end of a tube
- Safety hold is ideal for intraoral cutting and lip safety
- Cuts Elgiloy®, S.S. and Nickel Titanium .016" (0.406mm) to .018" x .022" (0.457mm x 0.559mm)
- Braided Wire .0175" (0.445mm)
- Carbide insert

Package Contains	Order Number
1	I00560



Distal End Cutter (Flush)

- Assures arch wire is cut flush with the end of a tube
- Safety hold is ideal for intraoral cutting and lip safety
- Cuts Elgiloy®, S.S. and Niti .014" (0.356mm) to .018" x .022" (0.457mm x 0.559mm)
- Braided Wire .0175" (0.445mm)
- 420SS insert
- Should not be autoclaved

Package Contains	Order Number
1	I00566

Ligature and Hard Wire Cutter

- Stainless steel
- Designed for cutting wires with minimum force
- Cuts up to .022" x .028" (0.559mm x 0.711mm)
- Hard tool steel inserts

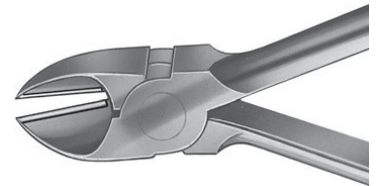
Package Contains	Order Number
1	100553



Heavy Wire Cutter

- Hard tool steel insert
- Cutting capacity up to .040" (1.016mm) in the rear area, .024" (0.610mm) in front

Package Contains	Order Number
1	100265



Ligature Cutter

- Soft ligature wire only – up to .020" (0.508mm)
- All edges of lock are lip safe for intraoral use
- Fine tips for easy intraoral access
- Pliers will cut wires up to the very tip
- Hard tool steel inserts are diamond honed

Package Contains	Order Number
1	100552



Miniature Cutter

- Soft ligature wire only – up to .012" (0.305mm)
- Hard tool steel inserts are diamond honed

Package Contains	Order Number
1	100551





Ligature Tying Plier (Coon)

- Semi-automatic
- Locking channel is chamfered and burr-free to allow wire to slide before locking without being cut
- Tips are thin allowing close contact to bracket
- Up to .012" (0.305mm) soft wire

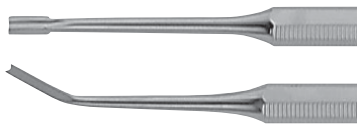
Package Contains	Order Number
1	I00153



Module Placing Plier

- For initial placing of force modules
- Ideal for placing ligatures and separators
- Easy access to difficult areas (posterior)
- Reduces module breakage
- Patient safe, easy spring-back action

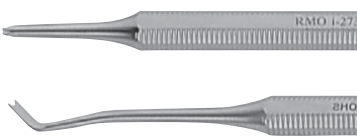
Package Contains	Order Number
1	I00810



Ligature Tucker and Tier (Broussard™)

- Stainless steel
- One end twists steel ligature into a tie
- The other tucks twisted wire

Package Contains	Order Number
1	I00274



Ligature Tucker

- Straight notched tip at one end for anterior brackets
- Angled notched tip at other end for posterior brackets
- Chamfered slots avoid breakage of ligature wires
- Tips are smoothed to avoid hurting tissue

Package Contains	Order Number
1	I00273



Needle Holder Small Narrow Tip (Mathieu)

- Ratchet lock handle
- Tips are serrated and carbide coated for positive gripping of ligature wires and modules
- Hook tip style makes placement of elastic modules and gripping easy.
- 5.4" (13.7cm) long
- Ligature wire up to .016" (0.406mm)

Package Contains	Order Number
1	I00028



Needle Holder Small (Mathieu)

- Precision made ligating instrument tips – safe beaks
- With ratchet lock handle
- Free sliding inner spring opens beaks
- Tips are serrated and carbide coated for positive gripping of ligature wires and modules
- 5.25" (13cm) long
- Can be used on ligature wire up to .016" (0.406mm)

Package Contains	Order Number
1	I00030



Mosquito Hemostat

- 4.75" (12cm) long
- With locking handle
- Serrated tips for positive gripping

Package Contains	Order Number
1	I00124

Posterior Band Removing Plier

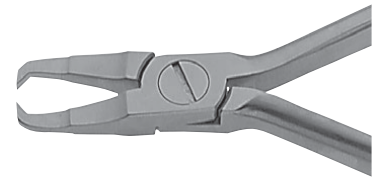
- Long chisel tip with carbide insert
- Facilitates removal of posterior bands
- Occlusal nylon pads are replaceable



Description	Package Contains	Order Number
Plier	1	I00347
Replacement Pads	10	I00357

Direct Bond Removing Plier

- Wedges between both edges of the base and the tooth surface and lifts off with virtually no stress
- Grips firmly for occlusal-gingival or mesial-distal use
- Hard tool steel insert



Description	Package Contains	Order Number
Narrow	1	I00545
Wide	1	I00546

Utility Scaling, Ligature Remover and Band Seating Instrument (Schure)

- Precision knurled handle
- Sharp scaling shape on one end and serrated band seating tip on the other
- Heat-treated tips maintain sharp edge for extended use

Package Contains	Order Number
1	I00349



Band Pusher/Scaler (Guequierre)

- Dual scaling surface
- One end has sharp curved scaling head with serrated tip on the other

Package Contains	Order Number
1	I00358





Cap Removal Plier

- This precision stainless steel instrument uses joint plier transfer to shear off convertible caps effortlessly with one fluid motion
- The slender rail design allows doctors to easily access the buccal region with little obstruction
- The blade tips feature a filleted design allowing for an easy, low-force cap removal
- Can be used on any convertible buccal tubes as well as convertible brackets
- Each packaged instrument includes two replacement blades

Description	Package Contains	Order Number
Cap removal Plier, 2 Replacement Blades	1	I01200
Replacement Blades	5 each	I01201



Cap Removal Instrument (RMO®)

- To remove caps from convertible tubes
- Replaceable blade provides leverage when removing cap
- Tip of blade fits securely in arch slot of tube
- Each packaged instrument includes 10 replacement blades
- Stainless steel handle and blade

Description	Package Contains	Order Number
Instrument	1	I00557
Replacement blades	5	I00559



Modular Omega Plier (RMO®)

- Used to adjust the expansion or contraction of the Omega loop on the Bimetric Distalizing Arch (Wilson)
- Hook on round end to hold Omega loop

Description	Package Contains	Order Number
Plier	1	I00548W
Replacement tips	2	I00549W



Crimpable Hook Plier

- For attaching crimpable hooks securely to arch wires with minimum pressure
- Stainless steel

Package Contains	Order Number
1	I00129



Direct Bonding Tweezer, Self-Locking w/Thin Tips

- Self-locking action
- Ideal for posterior bracket placement
- Thin tips fit between bracket wings and base
- Recommended for use with the RMO® Bondable Lingual Retainer

Package Contains	Order Number
1	I01102

Hex Wrench

- Stainless steel with hard steel tip
- For use with RM® Lock

Package Contains	Order Number
1	I00034



Fitzgerald X-Ray Holding Unit Rubber Bite Block

Description	Package Contains	Order Number
Large	2	I00364
Small	2	I00365



Ortho/Trace - Cephalometric Tracing Acetate

- Smooth matte with transparent surface - .003" (0.076mm)
- Gives sharp lines when tracing study radiographs
- Rounded corners match standard 8" x 10" (20.32 x 25.4cm) rounded corner radiographs

Package Contains	Order Number
100 sheet	J00086



Inter-Proximal Reduction (IPR) strips

- Perforations eliminate tooth enamel damage from overheating
- Diamond-coating increases lifetime of strip
- Color-coded system for clear, concise differentiation between grain styles

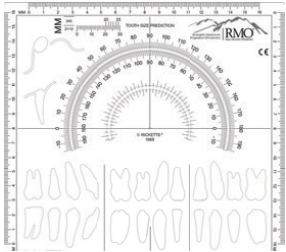


Description	Grain	Thickness	Color	Package Contains	Order Number
Single Sided	Extra-Fine	0.07 mm	Red	10	I00720
Single Sided	Fine	0.10 mm	Blue	10	I00721
Single Sided	Regular	0.14 mm	Green	10	I00722
Double Sided	Extra-Fine	0.11 mm	Red	10	I00730
Double Sided	Fine	0.16 mm	Blue	10	I00731
Double Sided	Regular	0.20 mm	Green	10	I00732



Instrument Rack

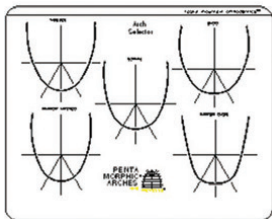
Package Contains	Order Number
1	I00042



Cephalometric Tracing Template

- Designed to provide the most anatomically correct presentation of typical teeth
- Includes: prediction table, frontal and lateral views of most teeth, pterygoid and condyln tracing shapes, metric scales, protractor and relationship guides
- Fits approximately 80% of the teeth without compensation, yet can also adjust to fit individual teeth.

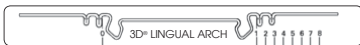
Package Contains	Order Number
1 pkg	I00512



Penta-Morphic® Arch Selector

- Made of 8" x 10" Vinylite

Package Contains	Order Number
1	I00509



3D® Lingual Arch Selector

Package Contains	Order Number
1	I00505



3D® Bimetric Arch Selector

Package Contains	Order Number
1	I00506



3D® Maxillary Bimetric Distalizing Arch Selector

Package Contains	Order Number
1	I00507



Distalizing Arch Selector

Package Contains	Order Number
1	G00360



RMO® Instrument Lubricant

- Technical grade white oil that can be applied after drying and prior to sterilization
- Improves the instrument life
- Fast and economical solution that prevents rust and protects cutting edges
- Regular treatment reduces the chance of oxidation

Package Contains	Order Number
1	J00201